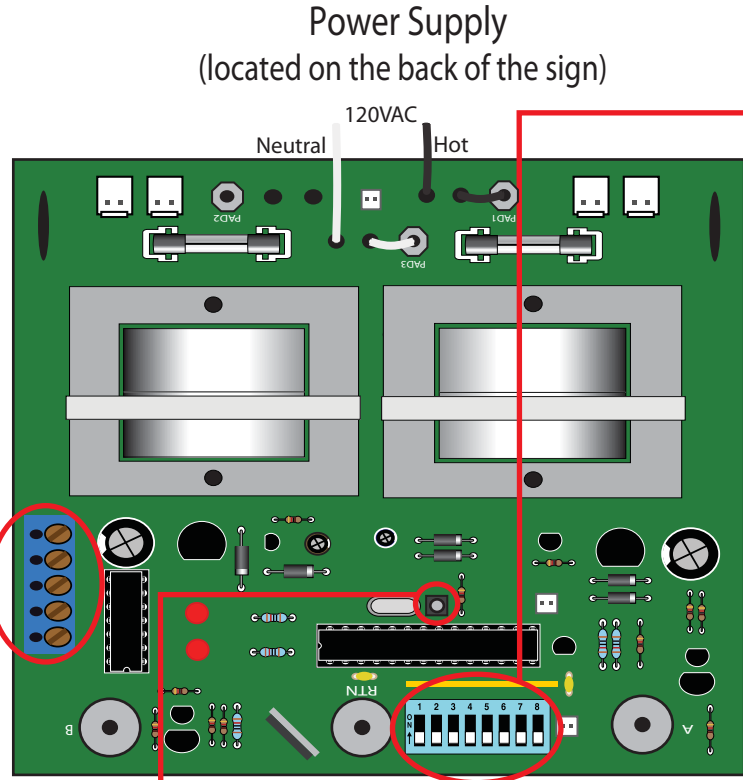
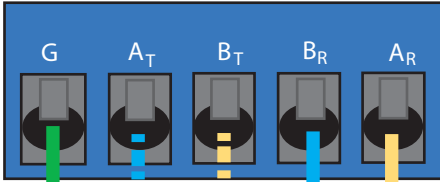


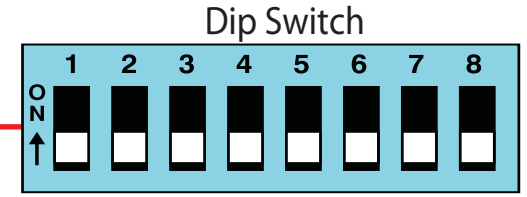
COMMUNICATION WIRING / ID SETUP

If you are using wired RS485 communication, connect the Communication Converter to the terminal block of the power supply as follows:

Communication Terminal Block



Power Supply
(located on the back of the sign)



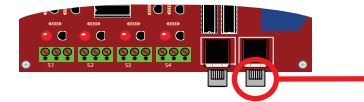
Set the Level ID and Lot ID using the dip switch on each power supply. Switches 1-4 correspond to the Level ID and switches 5-8 correspond to the Lot ID. The Lot ID is offset by -1 (i.e. when switches 5-8 are in the OFF position, the Lot ID will be read as 1). Below are two examples of dip switch configurations based on Level/Lot ID as well as their binary representation:

Level/Lot ID	Binary Representation	Configuration
Level ID = 1 Lot ID = 1	1000 0000	
Level ID = 5 Lot ID = 3	1010 0100	

Reset Button

If dip switch values are changed while the power supply is on, push the reset button for the adjustment to take effect.

RedStorm Controller Board



RJ45 Connector

