

# Rebel™ LED Display and Control Software

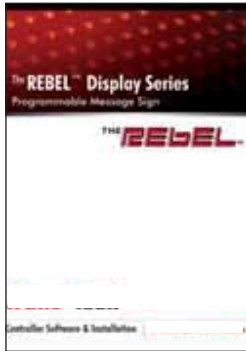
## Set-Up and Configuration

TT2011RBLINS-H

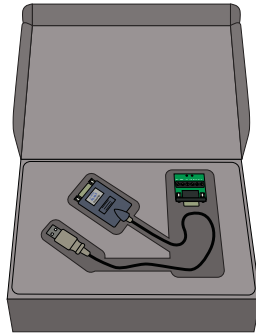
Thank you for purchasing the Rebel™ LED Display and Control Software.

Below is a list of the components that will be used during the setup and installation.

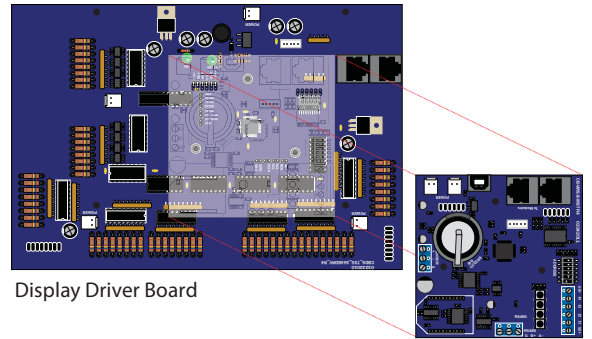
- Rebel Control Software (Figure 1)
- USB to RS485 Data Communication Kit (Figure 2)
- Master Controller board located inside the Rebel LED Display sign (Figure 3)
- Your PC (not included)
- Insulated wire to run from your PC to the Rebel LED Display sign (not included)



Rebel Software  
(Figure 1).



USB to RS485 Data Communication Kit  
(Figure 2).



Display Driver Board

Master Controller Board  
(Mounts to Driver Board)

Master Controller Board  
(Located inside the LED Display Sign)  
(Figure 3).

## Communications Set-up and Configuration

### Step 1. Mount the Sign and Connect to Power

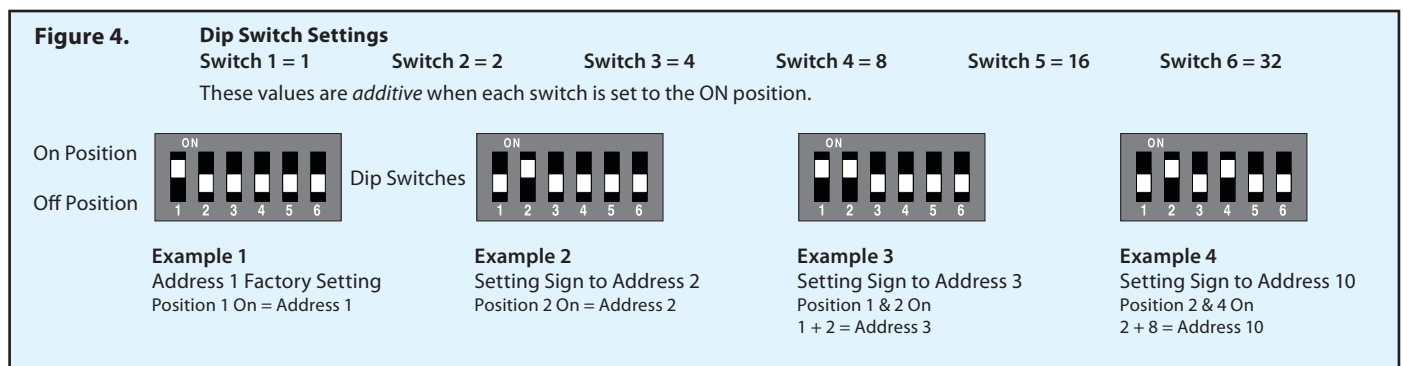
- Follow the printed mounting / wiring installation instructions that shipped with your Rebel LED Display Sign. See Figure 8 Overview.

### Step 2. Verify that the Rebel LED Display Sign Address is set correctly

- The dip switch positions on the Master Controller Board in the display sign determine the sign address. Each sign is preset at the factory with the Address of 1, as shown in Figure 4 Example 1. If you are installing only one Rebel LED Display Sign your sign address should be set to 1.
- If you are connecting two or more signs, use a daisy-chain wiring configuration to connect them. If the signs are displaying identical messages all sign addresses should be set to 1. If the signs will be displaying different messages, each will require a unique sign address. Use the dip switches and binary code logic to set a unique address for each sign. Refer to Figures 4 Examples 2 - 4, for unique address examples.

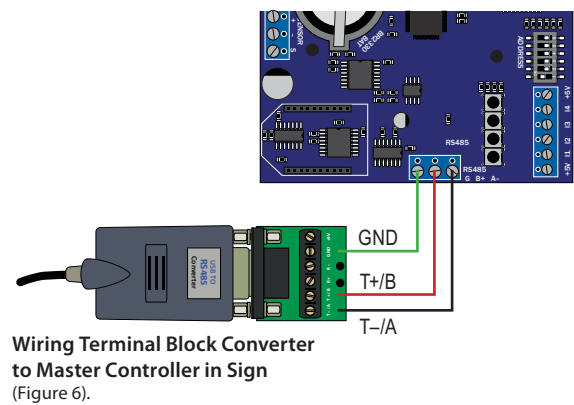
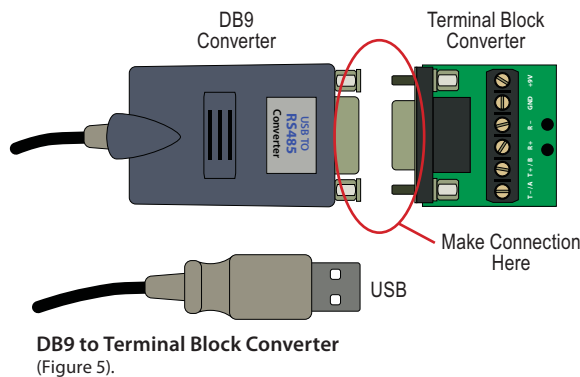
**Note:** When the Rebel Display sign is powered up, a built-in controller chip reads the sign's address. This enables proper communication between the sign and the software. If the address is changed while it is running, the sign must be shut down completely and powered up again in order for the new address settings to take effect. The sign address should also be updated in the control software sign profile to ensure proper communication between software and sign.

**IMPORTANT:** The address of the Rebel Display sign must match the address entered into the control software for that specific sign to ensure proper communication between sign and software.



**Step 3. Wire the Serial Connection between the Rebel LED Display Sign and the PC that will run the Rebel Control Software**

- a. Remove the DB9 Converter and the Terminal Block Converter from the data communication kit and connect as shown in Figure 5.
- b. Using 3 insulated wires or the cabling equivalent, connect and run wire from the Terminal Block Converter to the 3-position Master Controller terminal block within the LED Display sign.
- c. **IMPORTANT: DO NOT plug the USB cable into your computer at this time. See Step 4. for directions.**



**Step 4. Install the Rebel Software on your computer**

- a. Insert the Rebel Control Software CD into your computer's CD ROM. We recommend reviewing the Software Tutorial on the CD before installing and using your Rebel Software.
- b. Follow the prompts in the Software Installation Wizard to install the software and USB Drivers.
- c. **IMPORTANT: When you see the screen shown in Figure 7, plug the USB cable into your computer. Then click **Finish** to complete the software installation.**



Installation Wizard Complete (Figure 7).

**Step 5. Sign Profile and Message Creation**

- a. Open the Software Tutorial on the Rebel Software CD and follow the instructions to create messages and message groups, setup the sign profile and begin displaying messages.
- b. **IMPORTANT: Keep the Rebel Control Software running while displaying messages. Control software MUST be running on the computer in order to display messages on the Rebel LED Display Sign. If software is closed, the sign will not display messages.**

**Install Overview (Figure 8).**

